

ELEV 1335

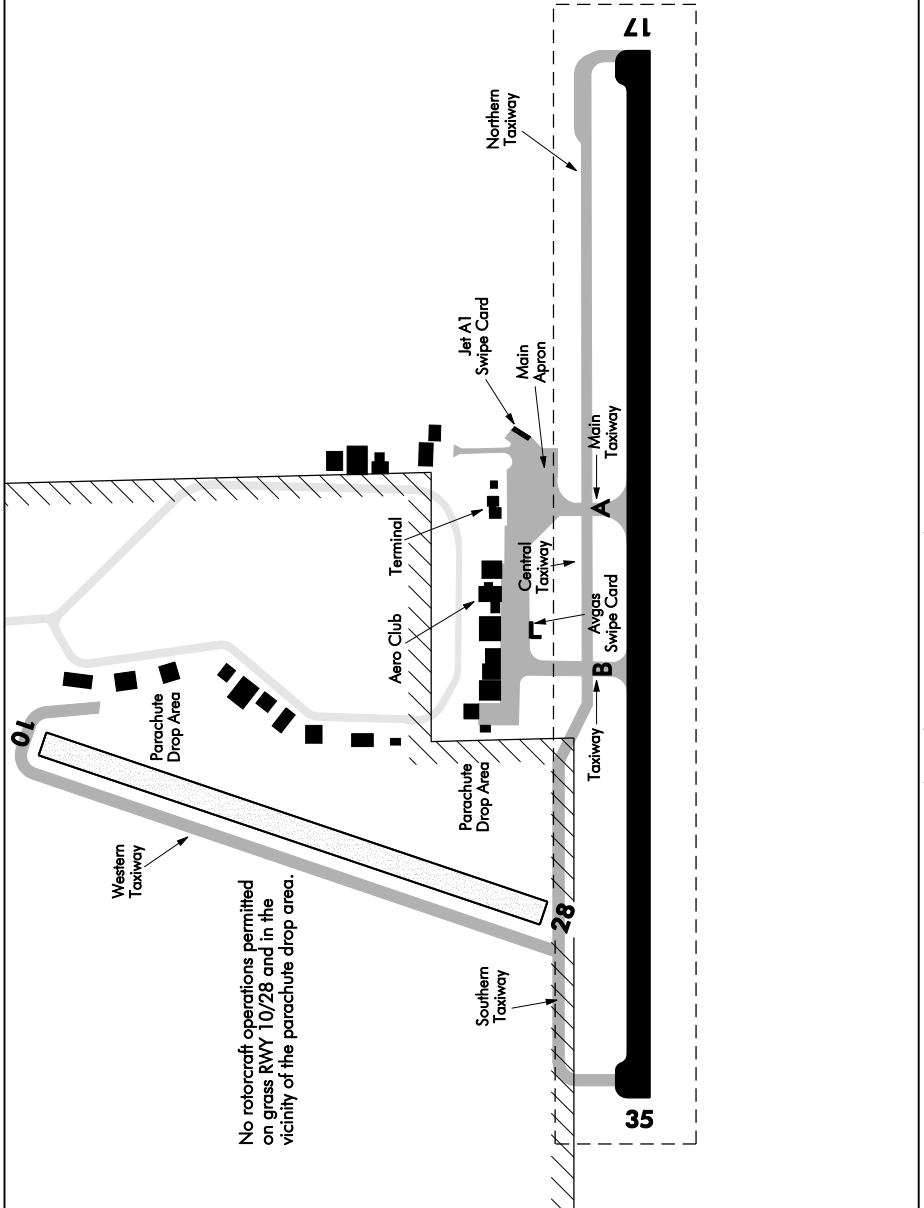
NZAP

AWIB: 125.2

# TAUPO GROUND MOVEMENTS (1)

UNATTENDED: 118.4

APGM1-H



Changes from 24 JUL 14: Apron area changes.

**Effective: 18 SEP 14**

ELEV 1335

NZAP

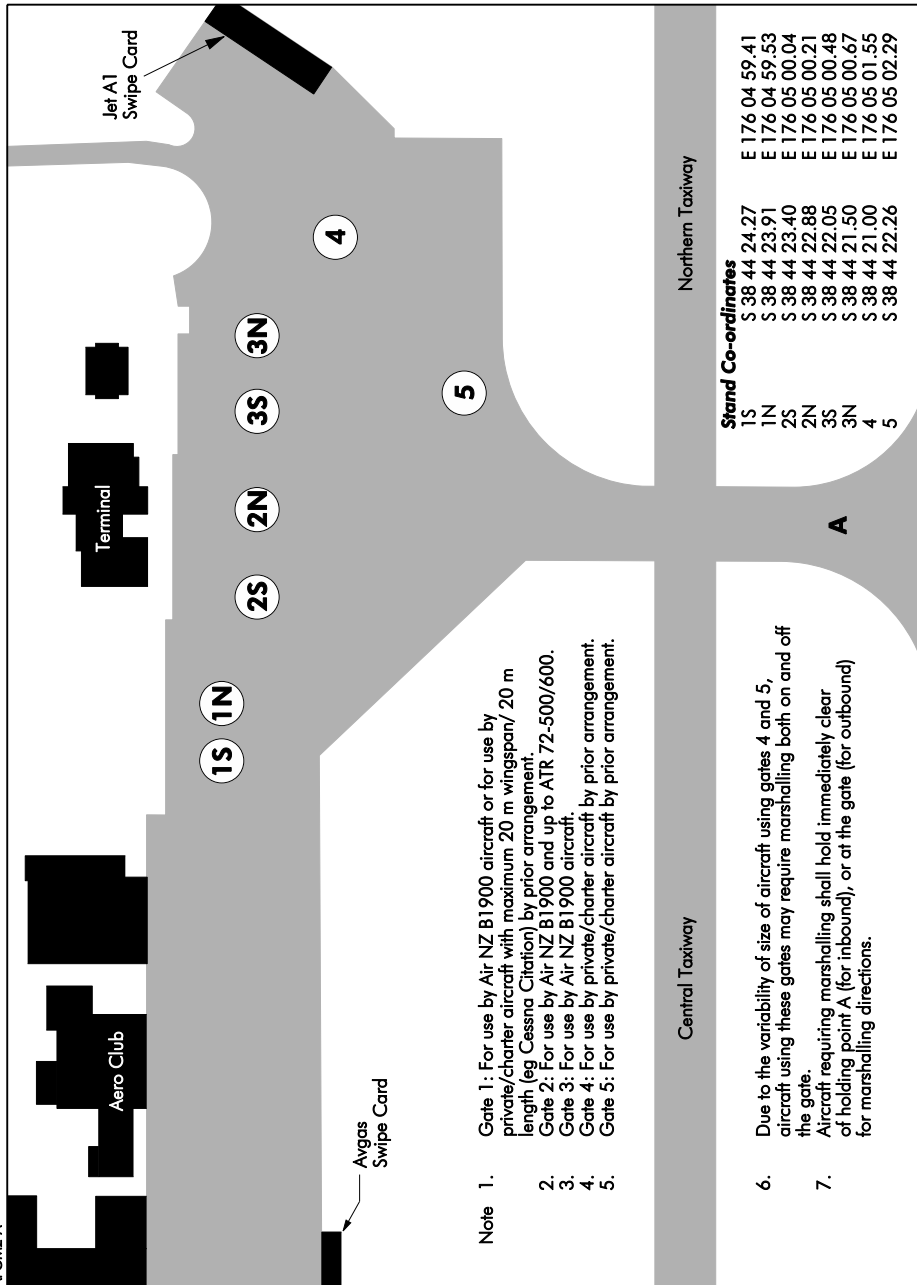
AWIB: 125.2

# TAUPO

## GROUND MOVEMENTS (2)

UNATTENDED: 118.4

APGM2-A



- Note
1. Gate 1: For use by Air NZ B1900 aircraft or for use by private/charter aircraft with maximum 20 m wingspan/ 20 m length (eg Cessna Citation) by prior arrangement.
  2. Gate 2: For use by Air NZ B1900 and up to ATR 72-500/600.
  3. Gate 3: For use by Air NZ B1900 aircraft.
  4. Gate 4: For use by private/charter aircraft by prior arrangement.
  5. Gate 5: For use by private/charter aircraft by prior arrangement.

Central Taxiway

Northern Taxiway

**Stand Co-ordinates**

1S	S 38 44 24.27	E 176 04 59.41
1N	S 38 44 23.91	E 176 04 59.53
2S	S 38 44 23.40	E 176 05 00.04
2N	S 38 44 22.88	E 176 05 00.21
3S	S 38 44 22.05	E 176 05 00.48
3N	S 38 44 21.50	E 176 05 00.67
4	S 38 44 21.00	E 176 05 01.55
5	S 38 44 22.26	E 176 05 02.26

6. Due to the variability of size of aircraft using gates 4 and 5, aircraft using these gates may require marshalling both on and off the gate.
7. Aircraft requiring marshalling shall hold immediately clear of holding point A (for inbound), or at the gate (for outbound) for marshalling directions.

New chart.